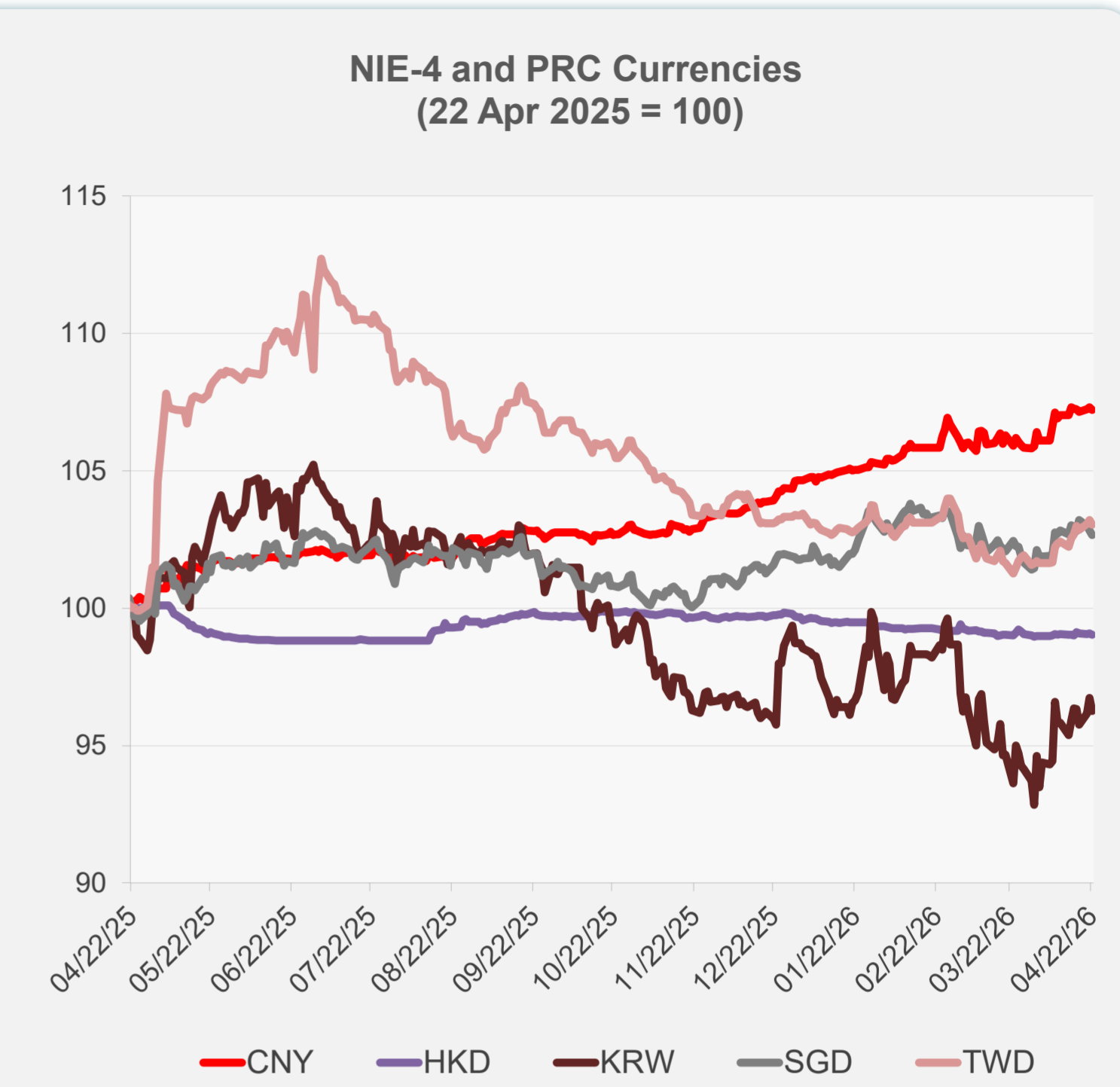
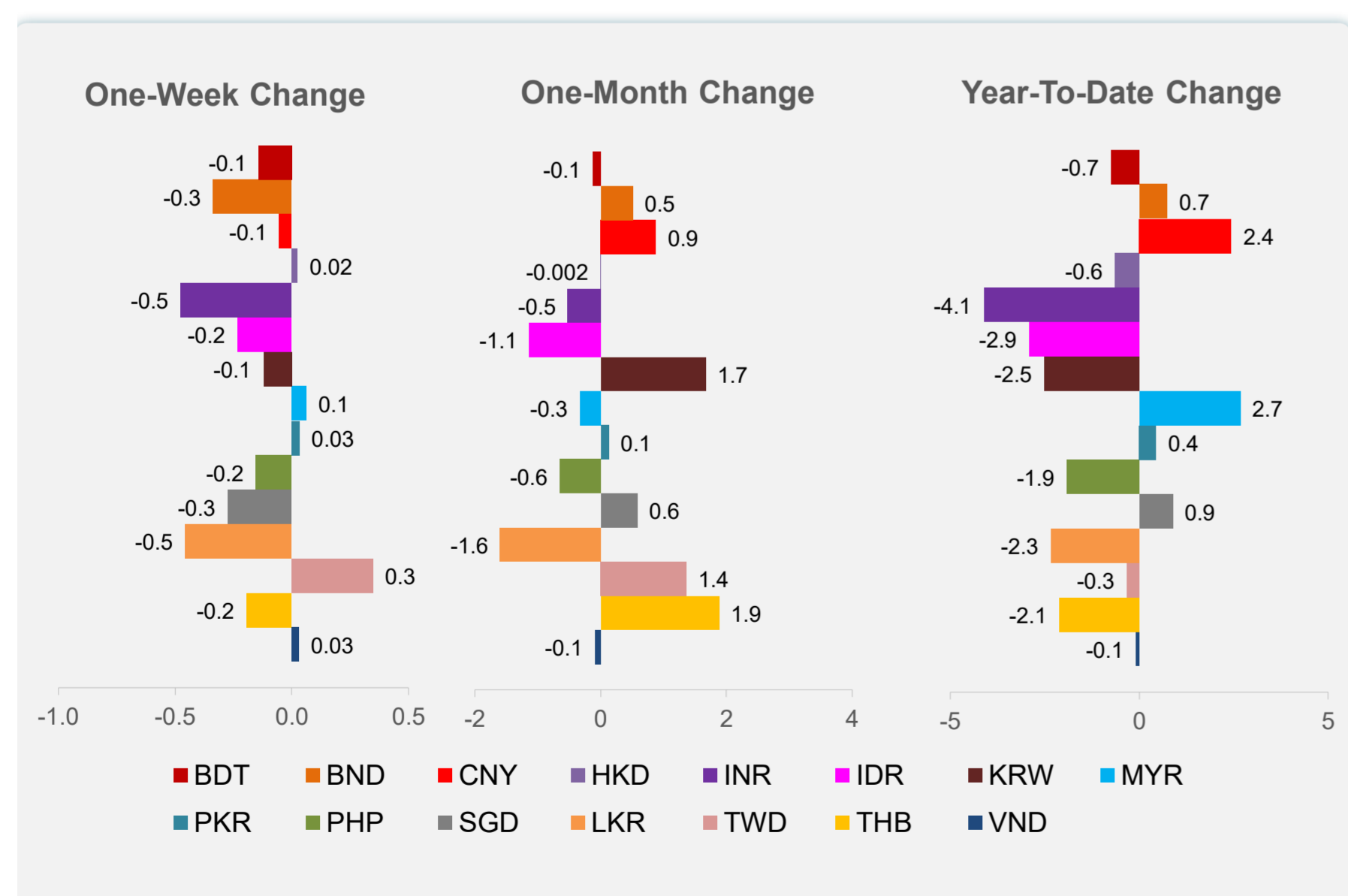
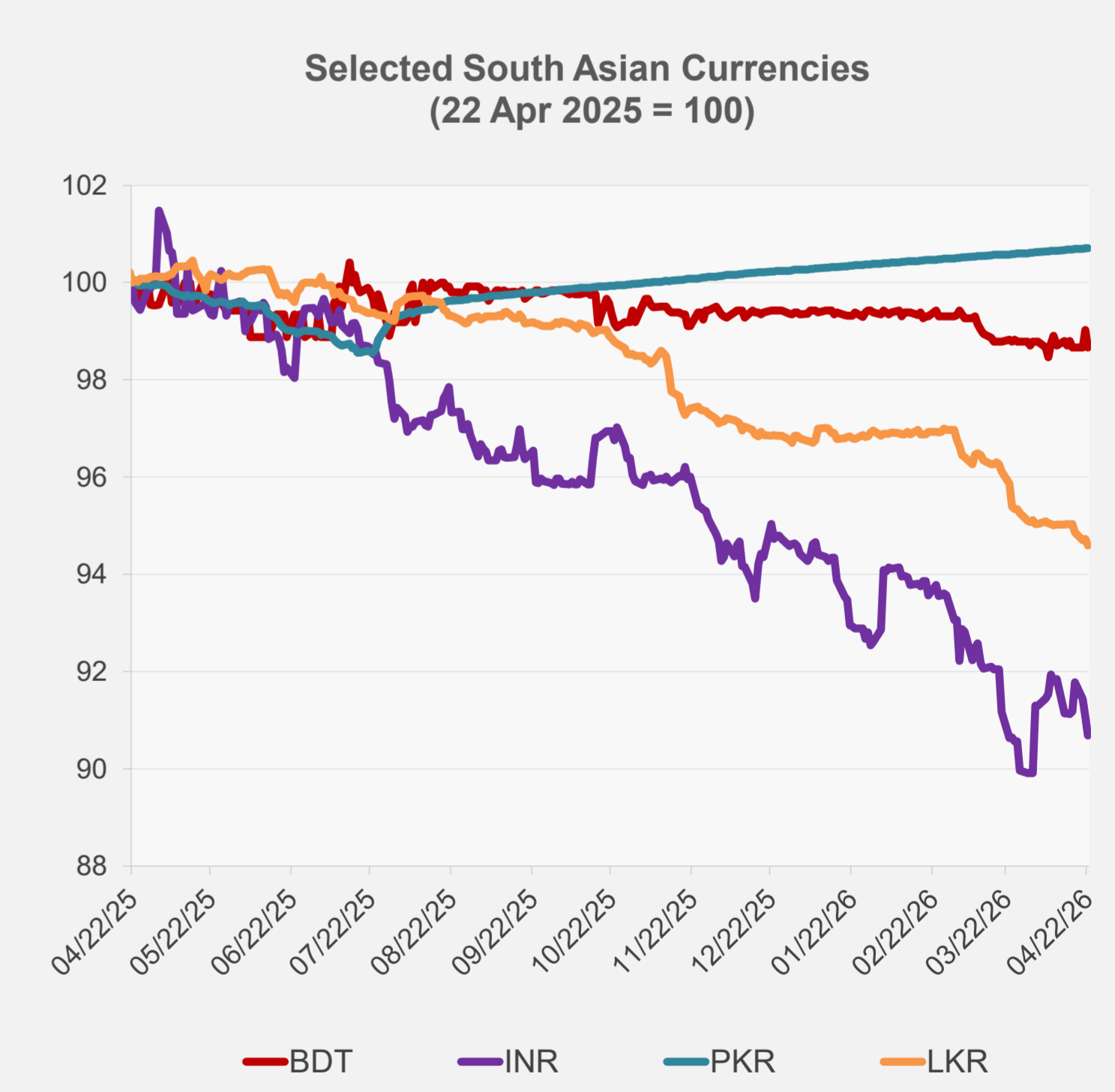
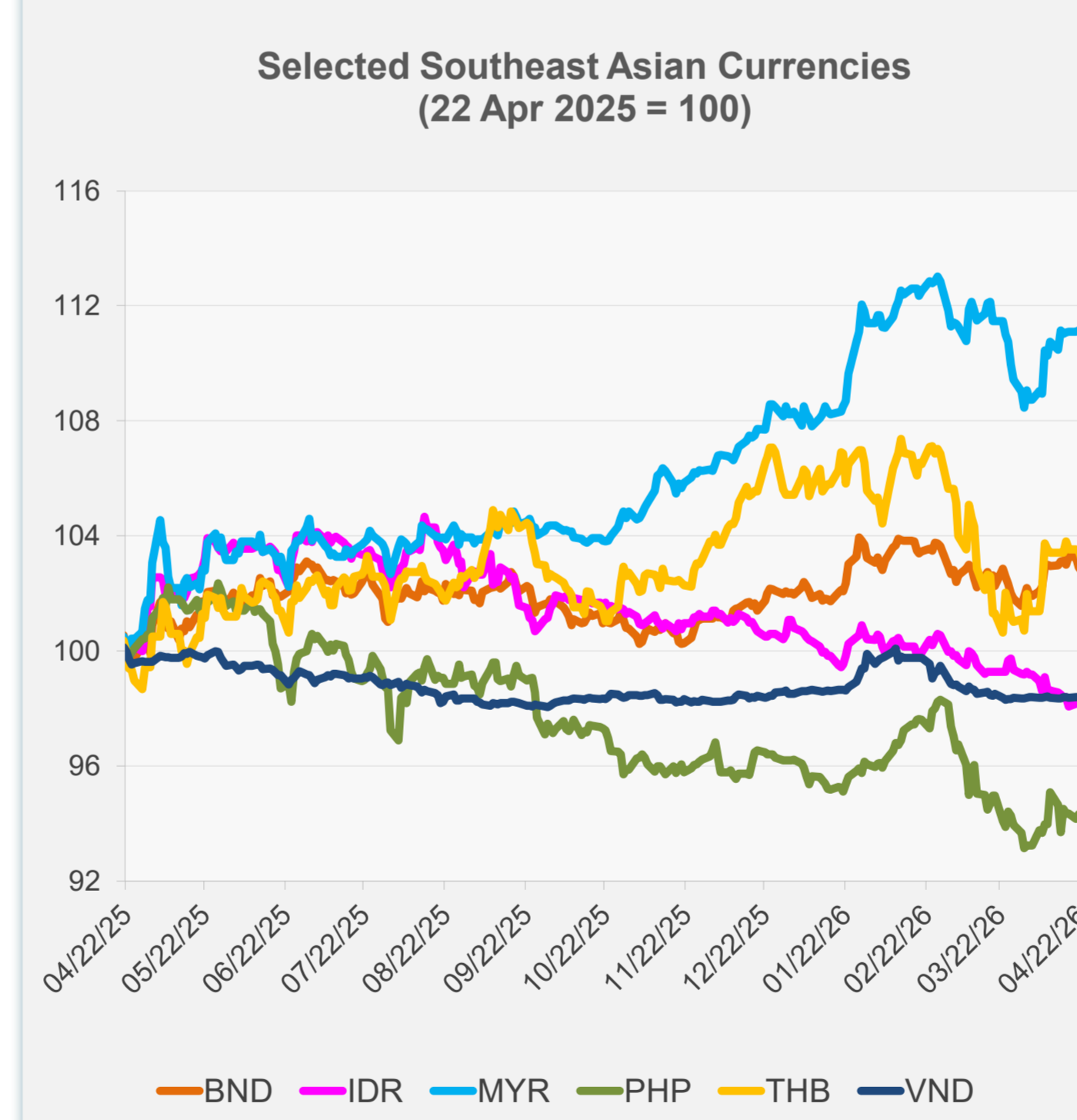


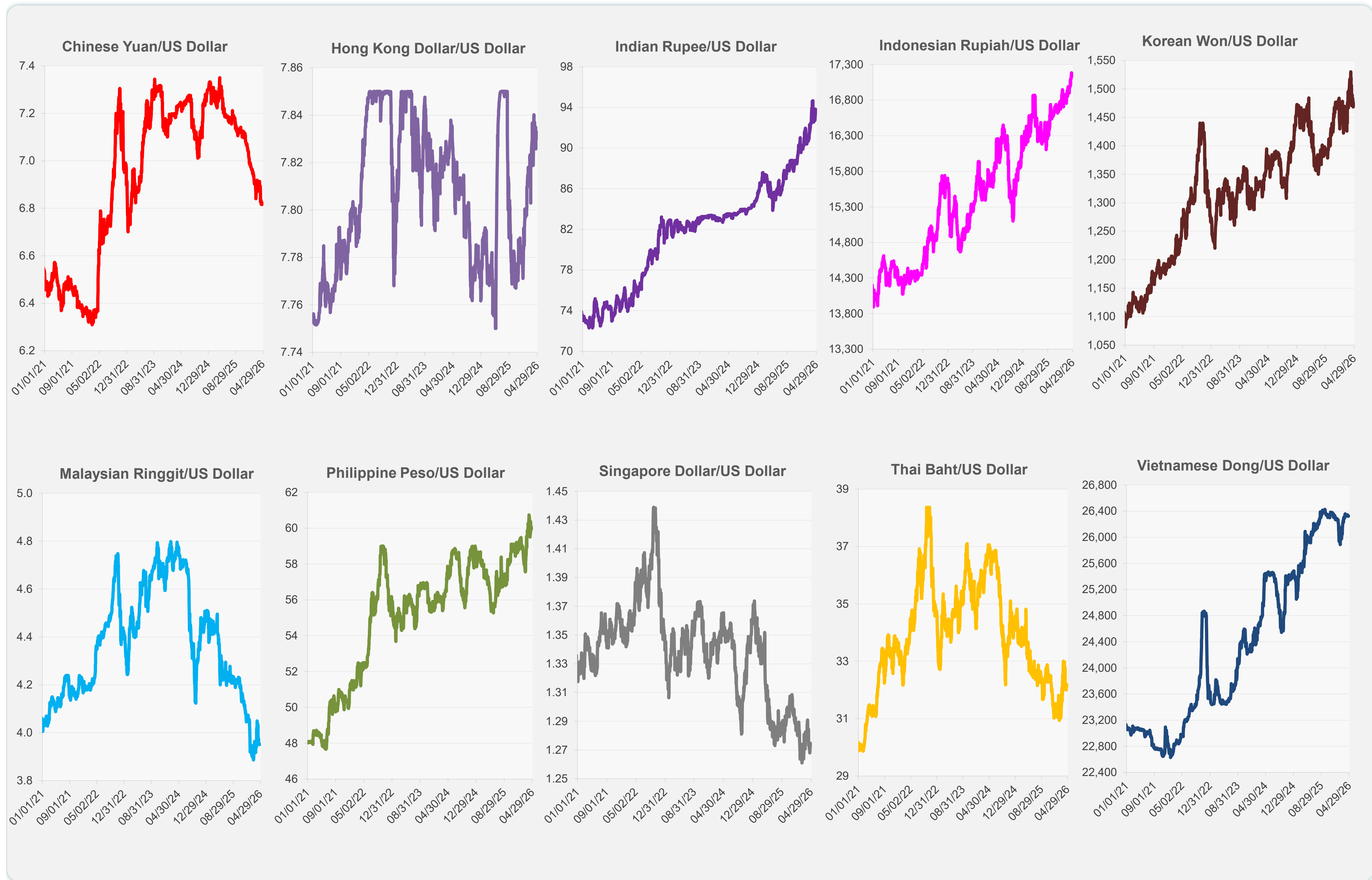
	Latest Closing	% change from Previous Day	% change from 01-Jan-26
Euro	0.85	-0.28	-0.22
Japanese yen (JPY)	159.22	-0.13	-2.03
Bangladeshi taka (BDT)	123.15	-0.37	-0.73
Brunei dollar (BND)	1.28	-0.10	0.74
Chinese yuan (CNY)	6.82	-0.09	2.44
Hong Kong dollar (HKD)	7.83	-0.04	-0.63
Indian rupee (INR)	93.84	-0.42	-4.11
Indonesian rupiah (IDR)	17,175.00	-0.18	-2.91
Korean won (KRW)	1,476.00	-0.51	-2.51
Malaysian ringgit (MYR)	3.95	-0.04	2.67
Pakistan rupee (PKR)	278.85	0.01	0.45
Philippine peso (PHP)	59.95	0.04	-1.91
Singapore dollar (SGD)	1.27	-0.15	0.88
Sri Lanka rupee (LKR)	317.00	-0.14	-2.33
Taipei,China NT dollar (TWD)	31.54	-0.16	-0.32
Thai baht (THB)	32.19	-0.26	-2.11
Vietnamese dong (VND)	26,322.50	0.03	-0.09



NIE = Newly Industrialized Economies



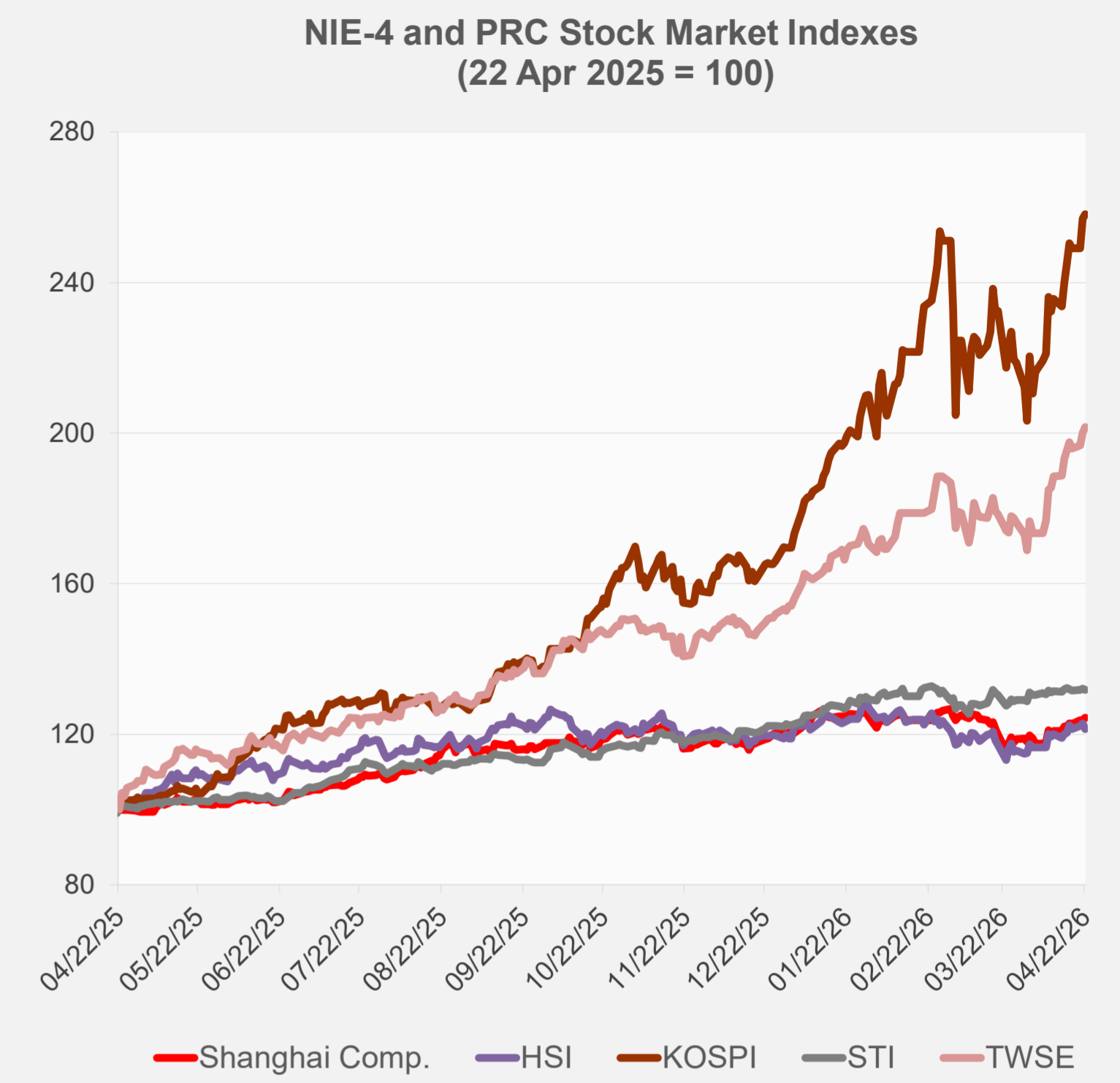
Note: Negative/Decreasing values indicate depreciation of local currency, and positive/increasing values indicate appreciation.
Source: ADB calculations using data from Bloomberg and Haver Analytics.



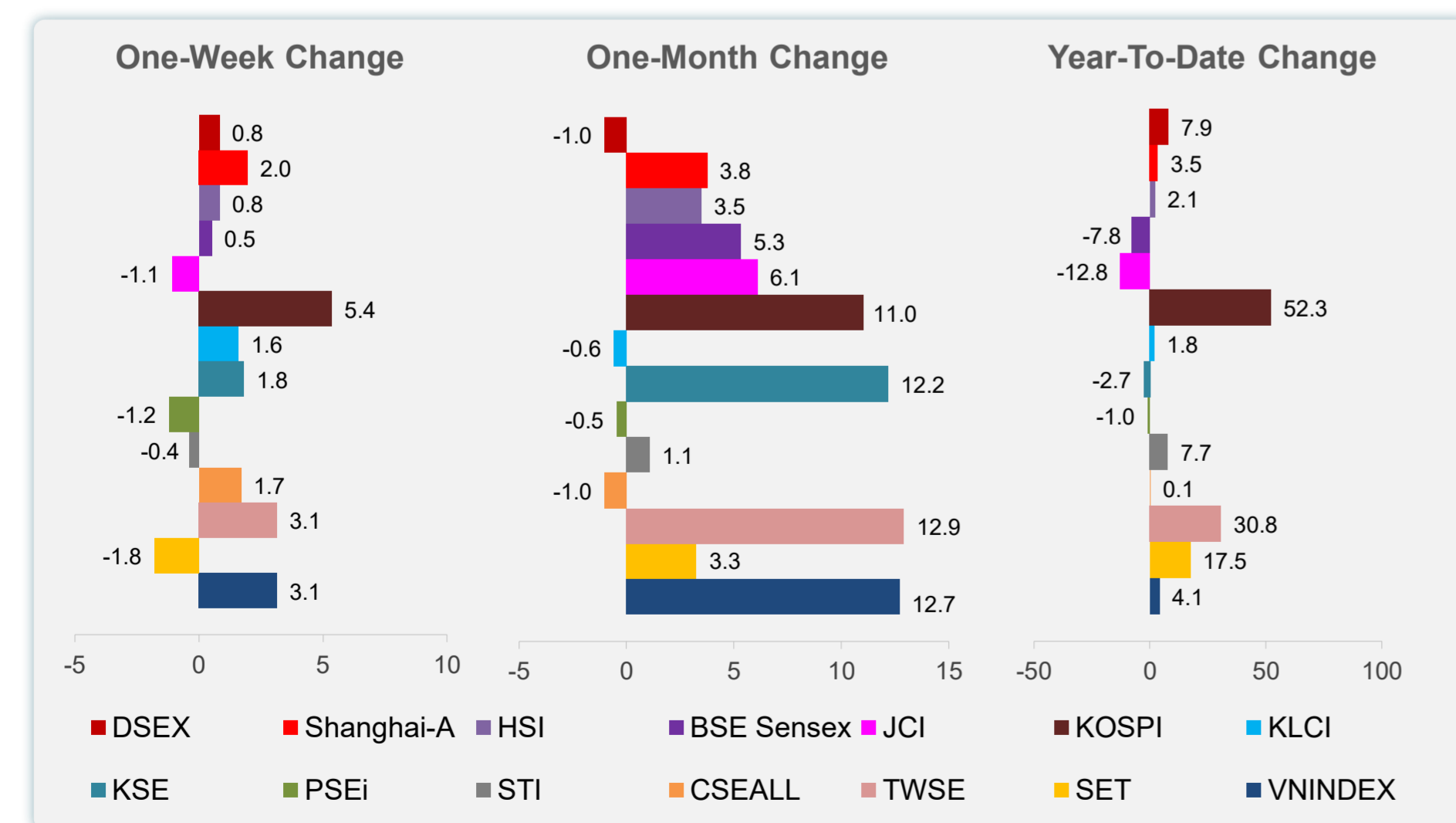
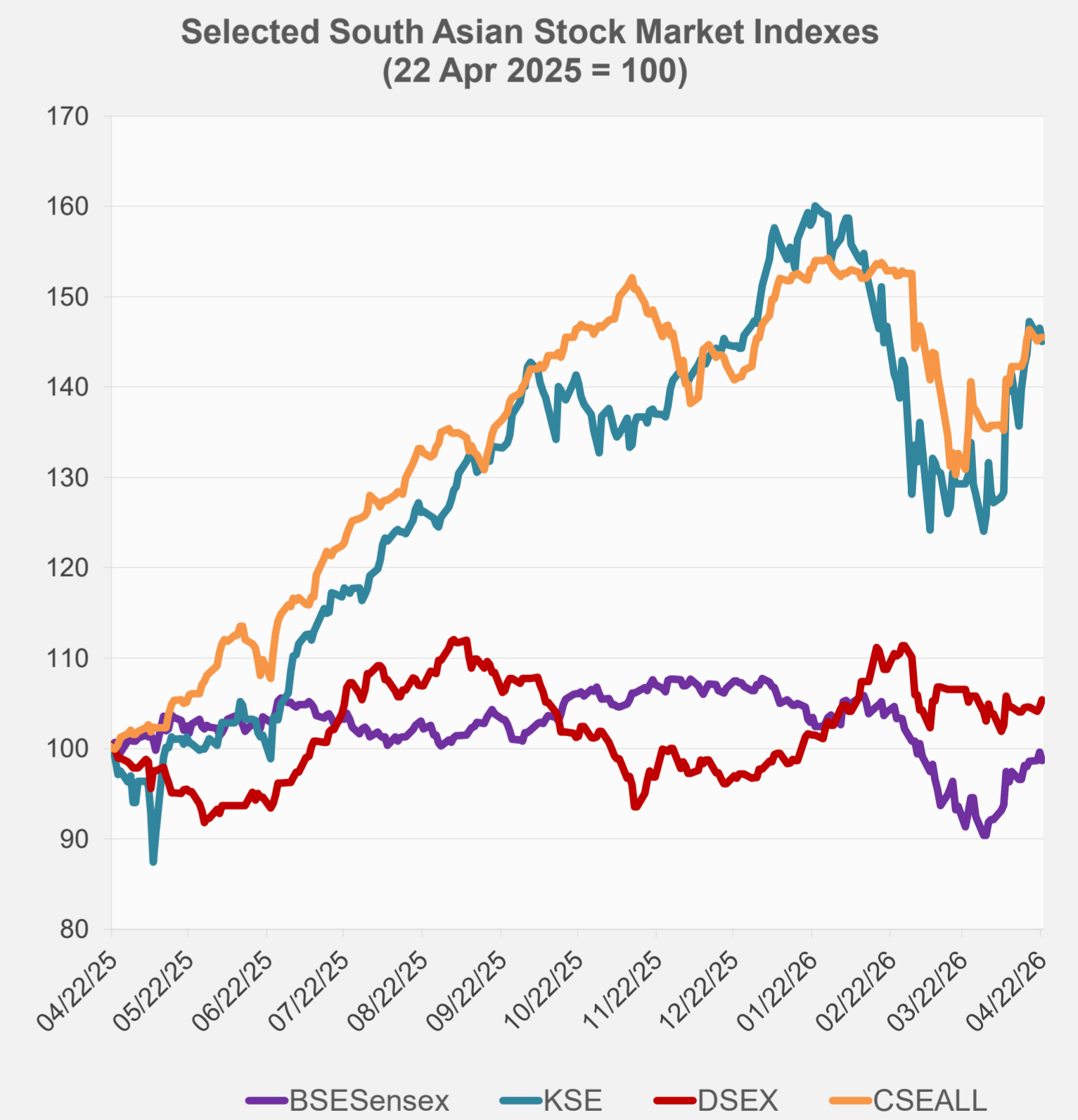
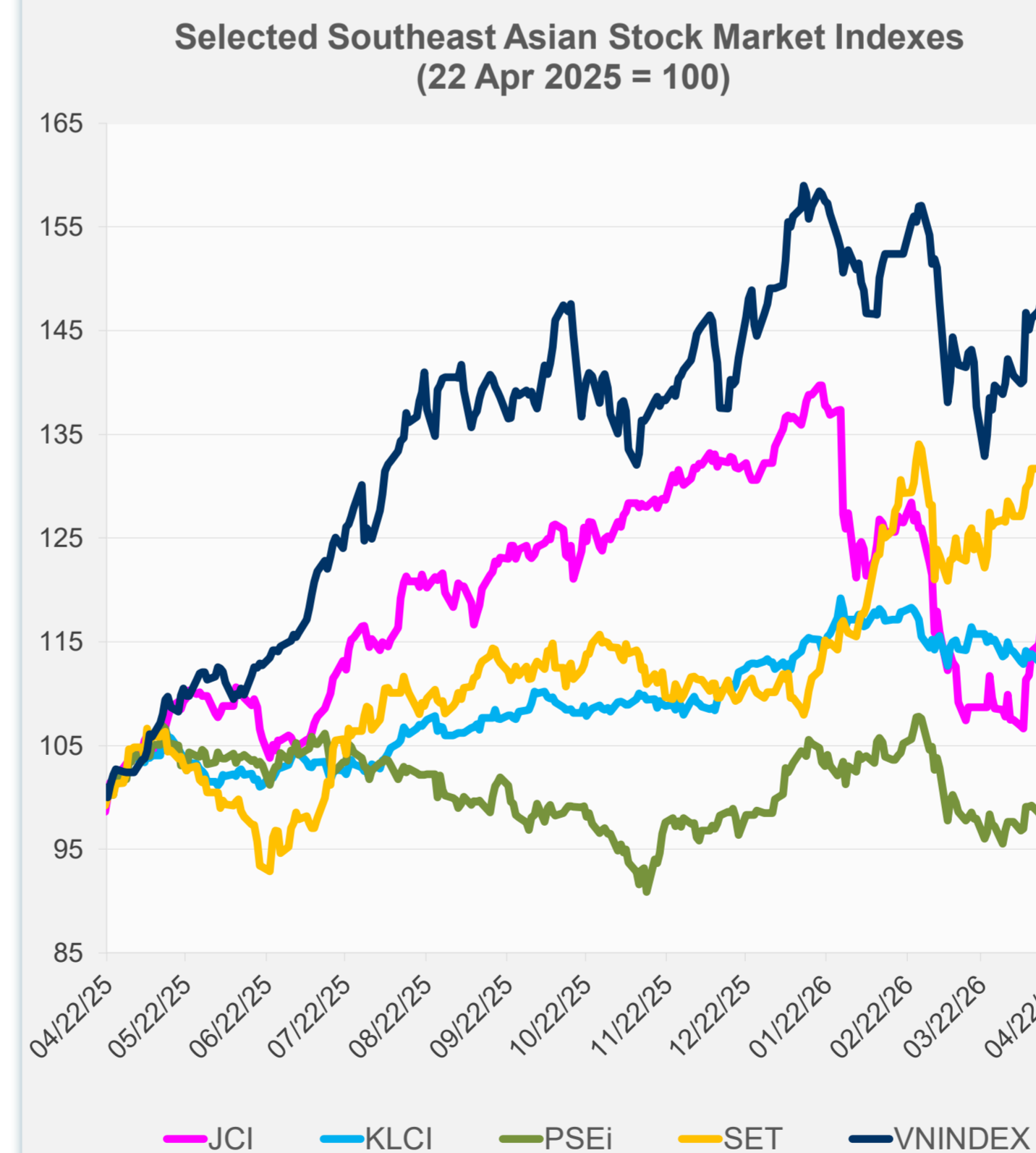
Source: Haver Analytics.

Daily Market Watch
STOCK INDEXES

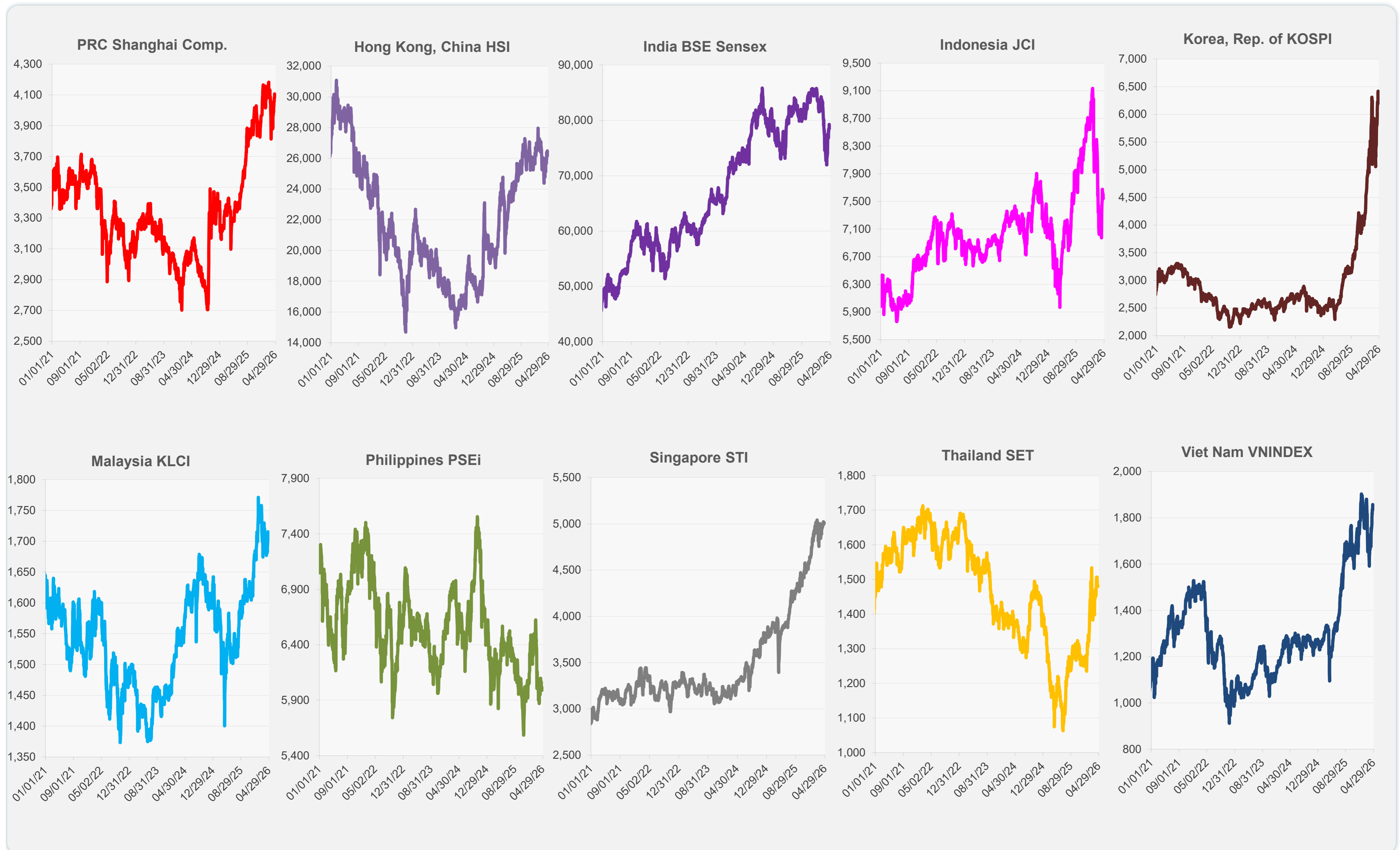
	Latest Closing	% change from Previous Day	% change from 01-Jan-26
US Dow Jones Ind Avg	49,490.03	0.69	2.97
US NASDAQ	24,657.57	1.64	6.09
US S&P 500	7,137.90	1.05	4.27
UK FTSE 100	14,335.49	-0.28	27.30
EURO STOXX 50	5,906.22	-0.41	1.98
Japan NIKKEI 225	59,585.86	0.40	18.37
Bangladesh DSEX	5,298.58	0.78	7.90
PRC Shanghai Comp.	4,106.26	0.52	3.46
Hong Kong, China HSI	26,163.24	-1.22	2.08
India BSE Sensex	78,516.49	-0.95	-7.83
Indonesia JCI	7,541.61	-0.24	-12.78
Korea, Rep. of KOSPI	6,417.93	0.46	52.29
Malaysia KLCI	1,710.39	-0.29	1.80
Pakistan KSE 100	171,732.30	-1.01	-2.69
Philippines PSEi	5,989.56	-0.48	-1.05
Singapore STI	5,002.72	-0.24	7.67
Sri Lanka CSEALL	22,639.81	0.06	0.07
Taipei, China TWSE	37,878.47	0.73	30.78
Thailand SET	1,479.74	-0.25	17.47
Viet Nam VNINDEX	1,857.30	1.30	4.08



NIE = Newly Industrialized Economies



Sources: ADB calculations using data from Bloomberg and CEIC Data Company.



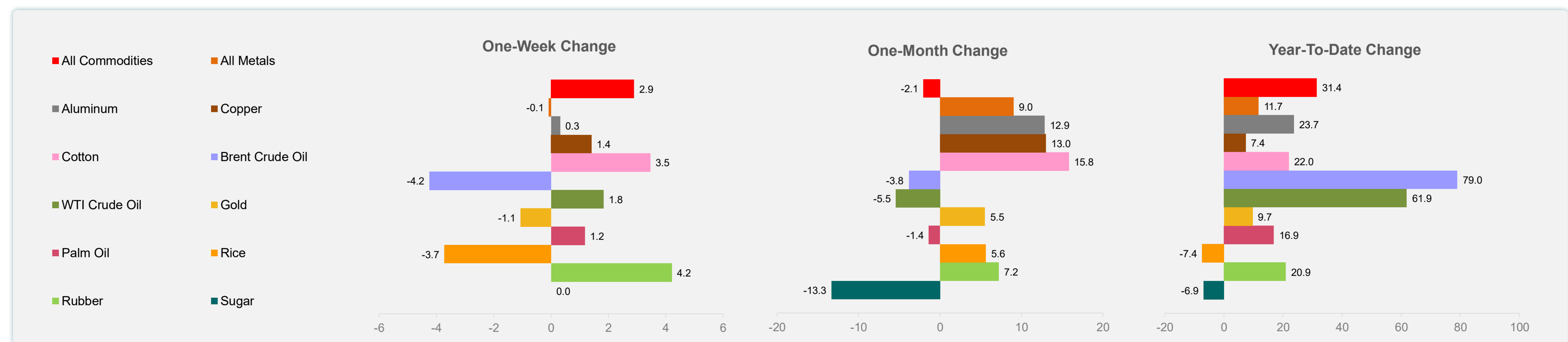
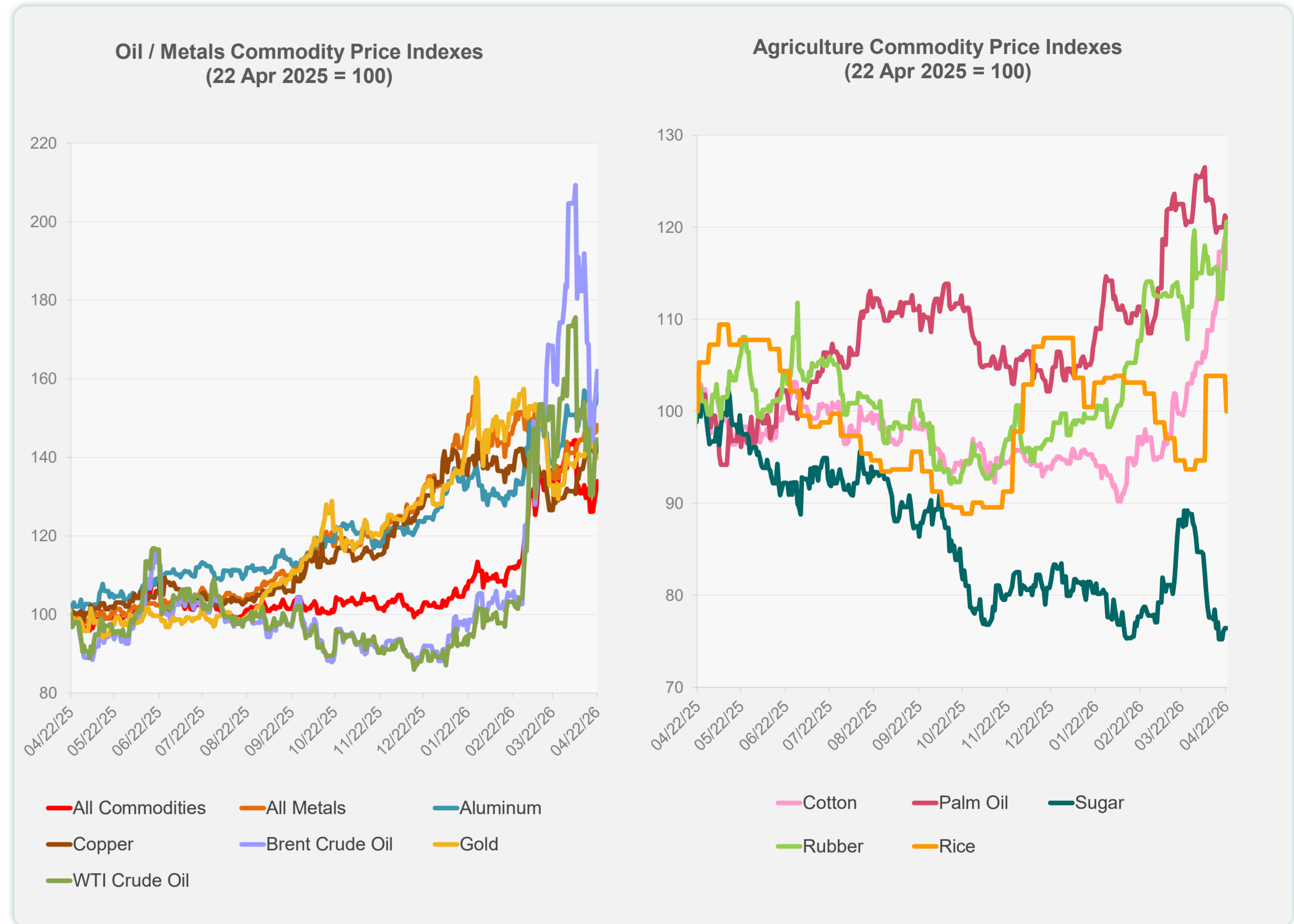
Sources: ADB calculations using data from Bloomberg and CEIC Data Company.

Daily Market Watch
COMMODITY PRICES

23 April 2026, 9:00 AM Manila

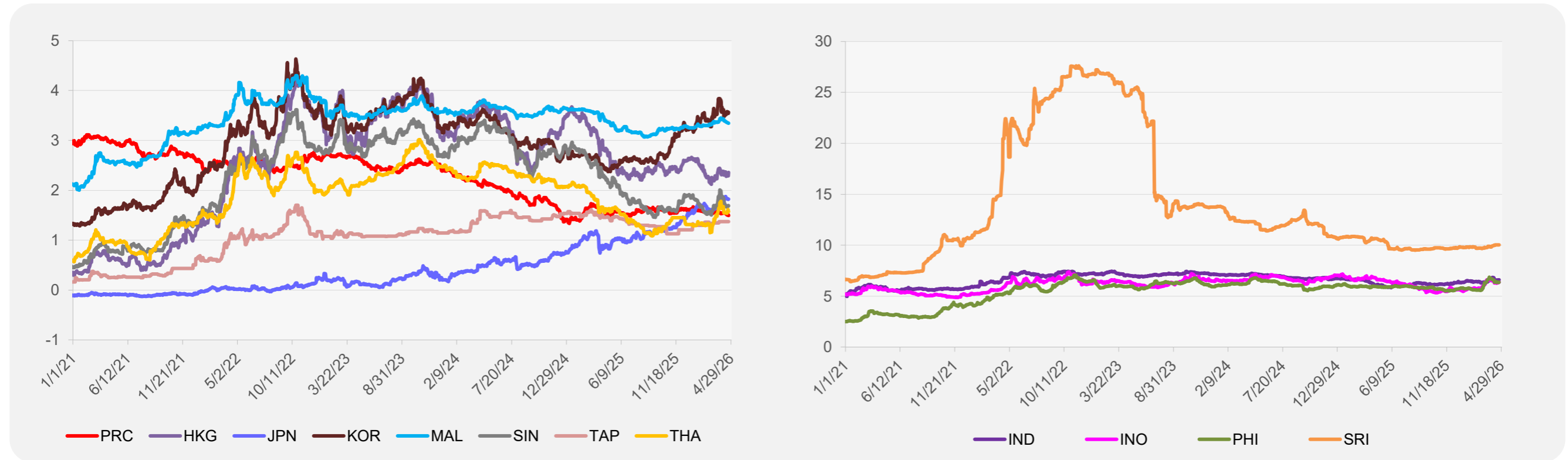
	Unit	Latest Closing	% change from Previous Day	% change from 01-Jan-26
S&P All Commodities	US\$	720.85	2.23	31.42
S&P All Metals	US\$	495.90	1.22	11.75
Aluminum	US\$/metric ton	3,670.57	1.78	23.67
Copper	US\$/metric ton	13,374.19	1.60	7.39
Cotton	US cents/lb	75.64	-2.85	21.96
Brent Crude Oil	US\$/barrel	111.78	3.82	79.00
WTI Crude Oil	US\$/barrel	92.96	0.90	61.89
Gold	US\$/troy oz	4,739.90	0.42	9.74
Palm Oil	US\$/metric tonne	1,132.18	-0.37	16.88
Rice ¹	US\$/metric ton	413.00	-3.73	-7.40
Rubber ²	US\$/kg	260.00	1.96	20.93
Sugar	US cents/lb	13.77	0.00	-6.90

¹ Latest closing price from 8 April 2026.
² Singapore Exchange, Ribbed Smoked Sheet Rubber.

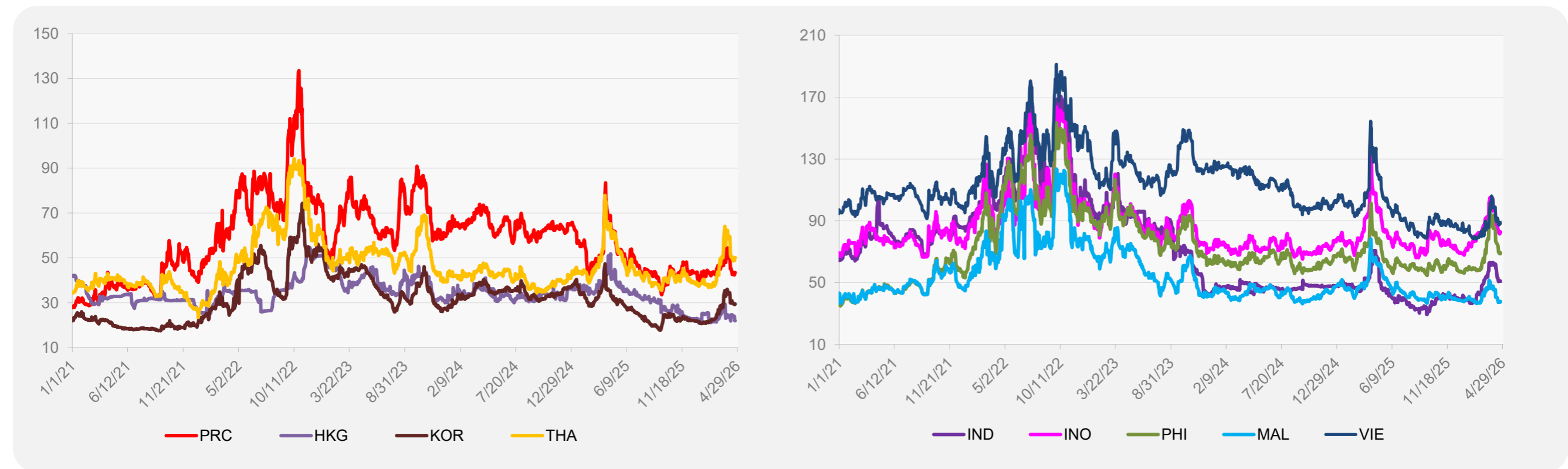


Source: ADB calculations using data from Bloomberg.

5-YEAR LOCAL CURRENCY GOVERNMENT BOND YIELDS (%)



5-YEAR CREDIT DEFAULT SWAP¹



¹ In USD and based on sovereign bonds.
Source: ADB calculations using data from Bloomberg.